

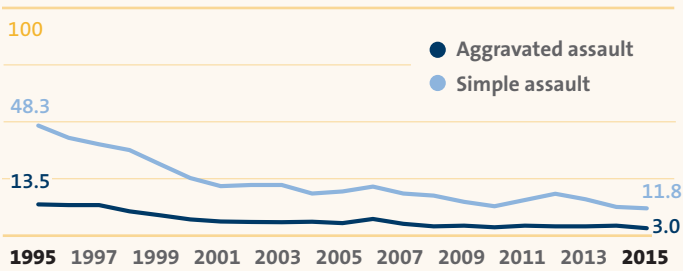
# Assault

Assault may be broken into two categories—aggravated or simple. Aggravated assault is defined as an attack with a weapon, an attack that causes serious bodily harm, or threatened assault with a weapon. Simple assault is defined as an unlawful attack or threat of attack that does not cause serious bodily harm.<sup>A</sup> Assault victimization varies largely by sex and geography. Some professions, including law enforcement and emergency room nurses are also at an increased risk.

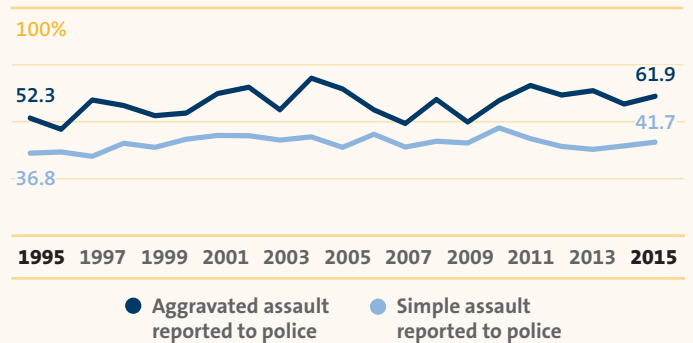
## Trends

Consistent with crimes trends as a whole, assault victimization rates have decreased substantively over the past two decades. In 2015, rates for both aggravated and simple assault were **70% lower** than in 1995.<sup>B</sup>

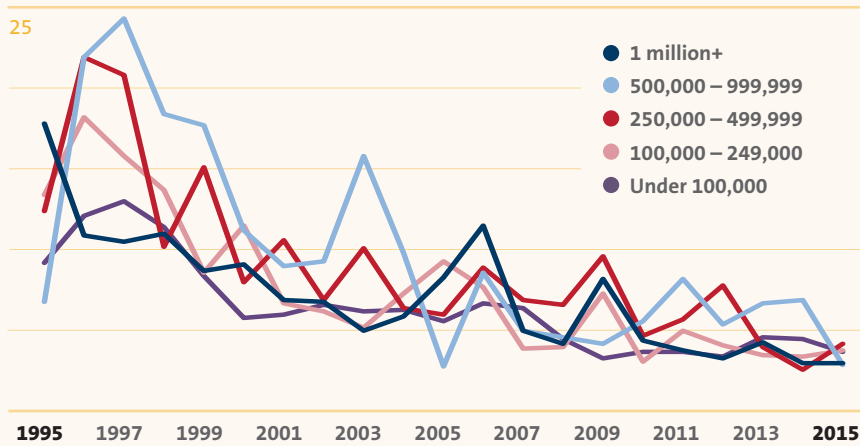
**Aggravated and Simple Assault<sup>B</sup>**  
rate per 1,000 people



**Aggravated and Simple Assault Reported to Police<sup>B</sup>**



**Aggravated Assault by Population Size<sup>B</sup>**  
rate per 1,000 people



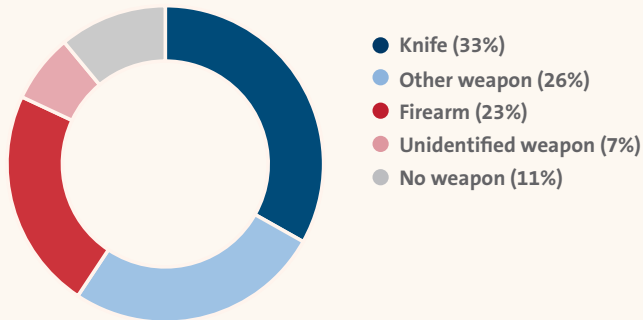
### Did You Know?

While population size is not the only factor contributing to aggravated assault victimization rates, cities with populations **over 1 million** have, on average, **lower rates** of aggravated assault compared to cities with populations between 500,000 and 999,999.<sup>B</sup>

# Current Data on Assault

In 2015, 33% of aggravated assault victimizations were committed with a knife, 23% with a firearm, and 11% without a weapon. One-third of aggravated assaults were either committed with another form of weapon or an unidentified weapon.<sup>B</sup>

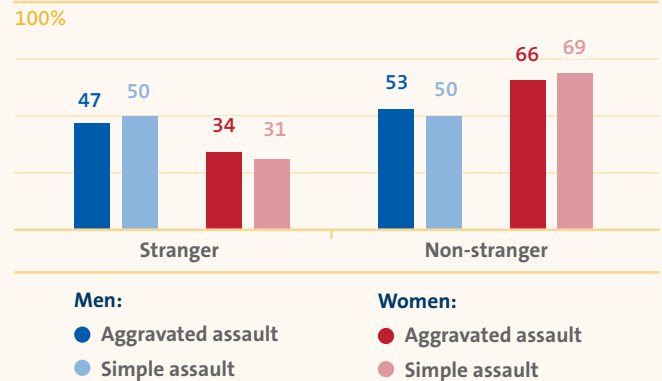
**Weapons Used in Aggravated Assaults<sup>B</sup>**



In 2015, most aggravated assaults were committed by someone the victim knew. **Women** who were assaulted knew their assailant more than **60%** of the time, compared to roughly **50% of men.**<sup>B</sup>

**Victim Relationship to the Offender<sup>B</sup>**

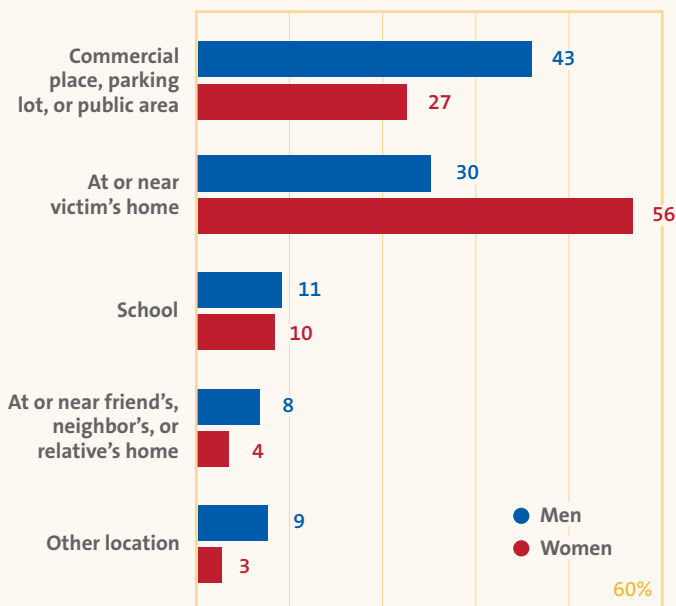
*by victim sex and type of assault*



An estimated 3 in 1,000 people were victims of aggravated assault in 2015. Of these, **56% of women** reported that they were either **home or close to their home** at the time of the assault. Comparatively, **43% of men** reported that they were in a parking lot, commercial place, or other **public area** at the time of assault.<sup>B</sup>

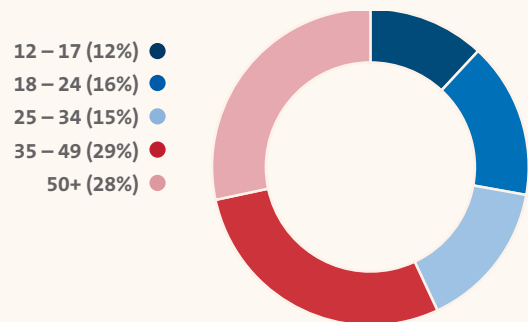
**Aggravated Assault by Location<sup>B</sup>**

*and victim sex*



In 2015, individuals age **35 to 49** and those **50 and over** accounted for **more than half** of aggravated assault victimizations.<sup>B</sup>

**Age of Aggravated Assault Victims<sup>B</sup>**



## SOURCES

- A Bureau of Justice Statistics, "Violent Crime," <https://www.bjs.gov/index.cfm?ty=tp&tid=31>
- B Bureau of Justice Statistics, *National Crime Victimization Survey, Concatenated File, 1992-2015*, (U.S. Department of Justice)